

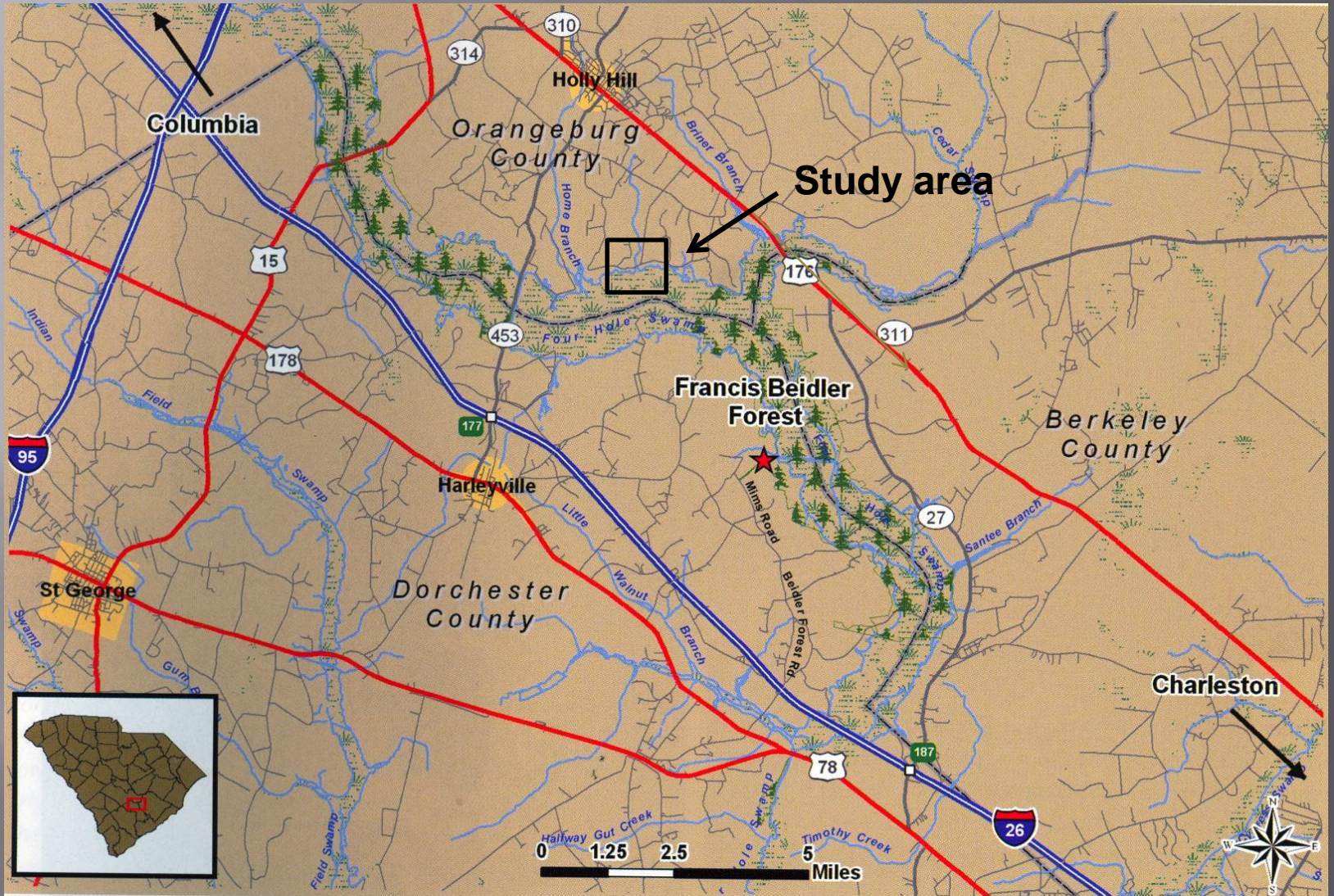
Tree Growth Response Across an Hydrological Gradient at Four Holes Swamp, South Carolina



William Conner, Ph.D. (Clemson University, Georgetown, SC)
Dan Tufford, Ph.D. (University of South Carolina, Columbia, SC)



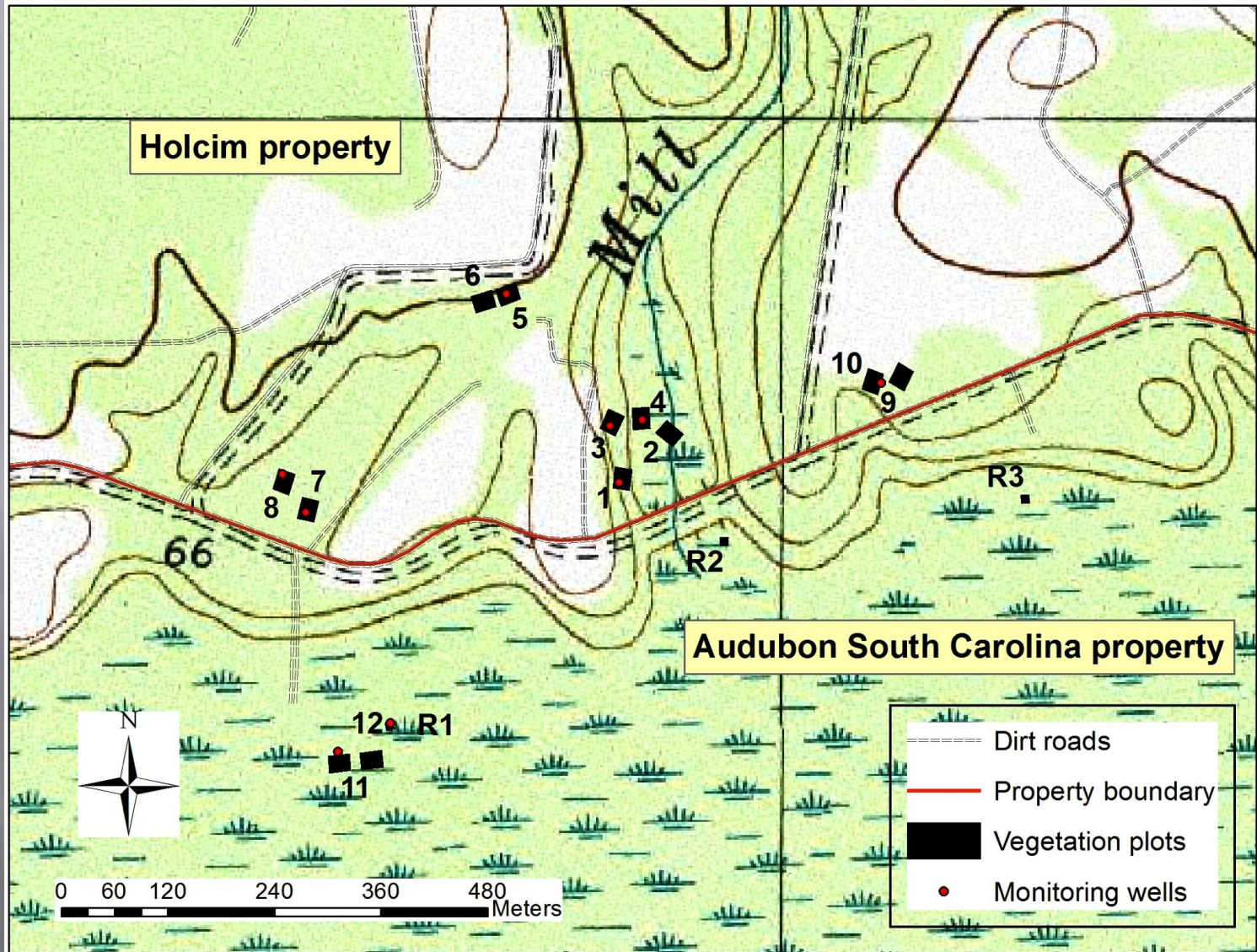
Study Area



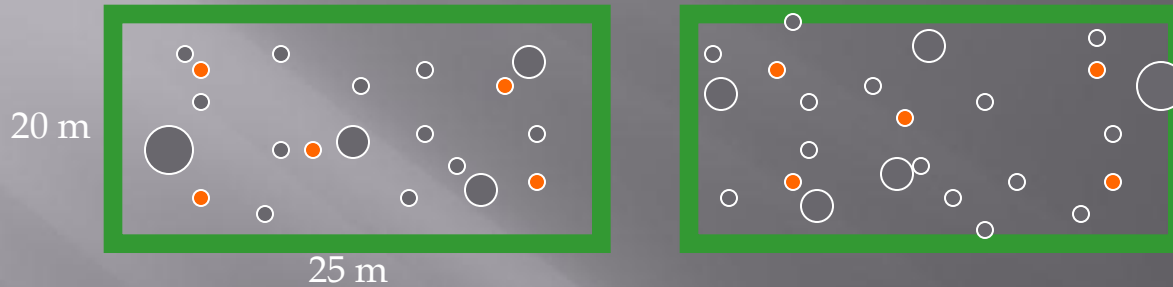
Study Area



Study Area



Data Collected



- Trees
 - Diameter, Basal area (annually)
 - Diameter Growth (monthly)



- Litterfall (once/month)



Data Collected

Water table monitoring

- Installed 10 wells
- Deployed water level loggers
 - Hourly recording interval
- (Also monitored WQ field parameters)



Precipitation

- Tipping bucket recording gauge
- In Beidler Forest
 - near study site

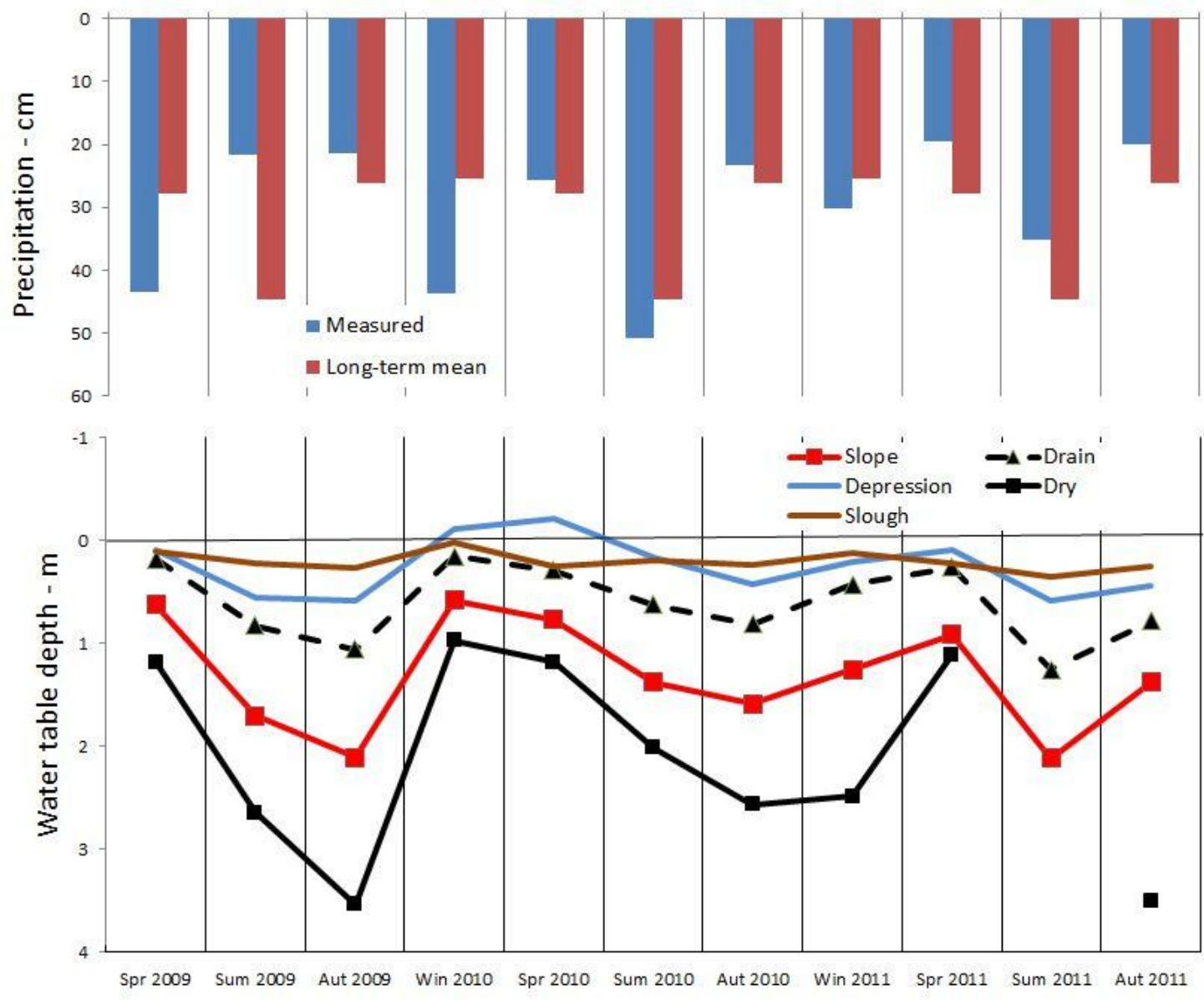
Surveyed well elevations

- Meters above mean sea level
- Water table depth (not elevation) used in this analysis

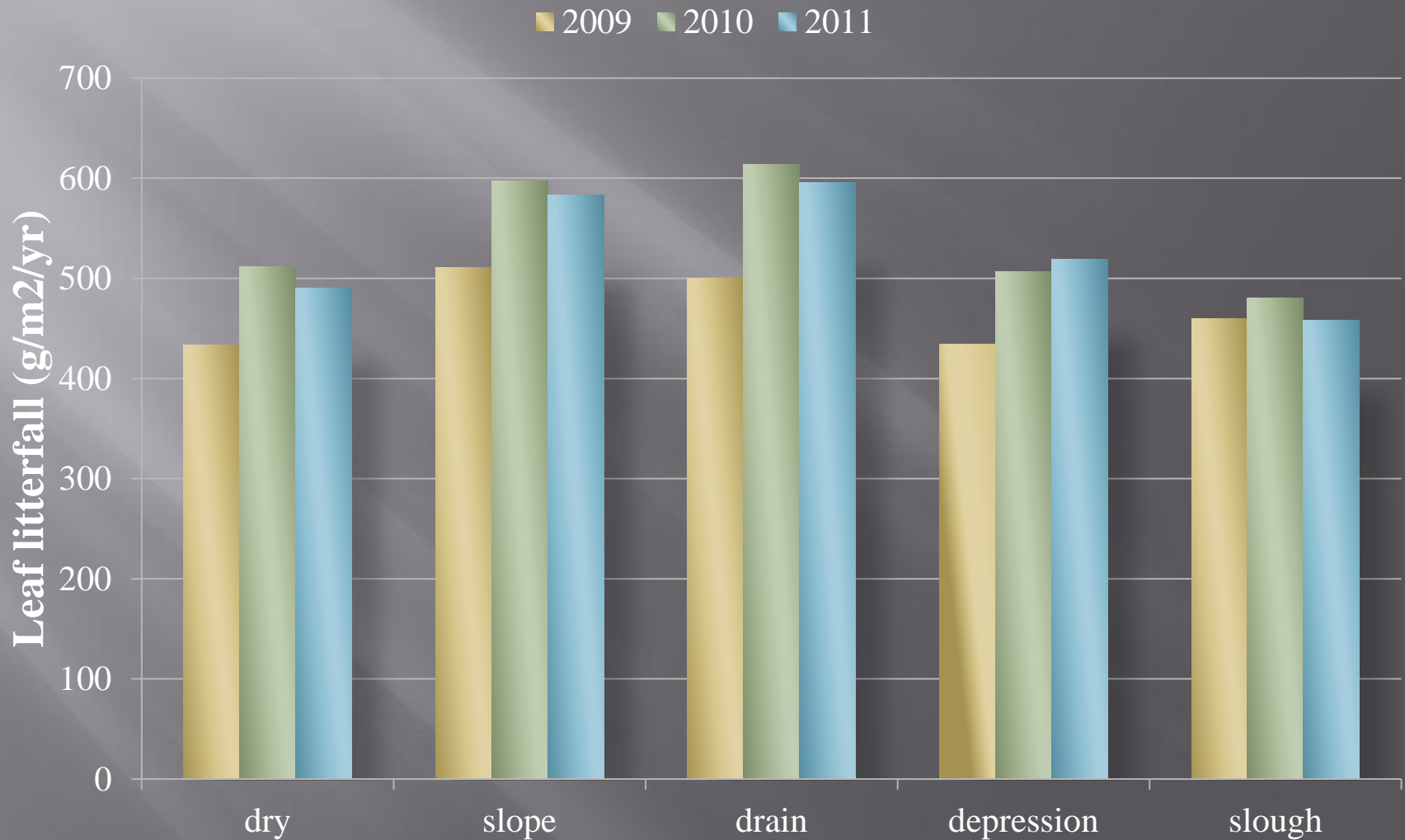




Results: Hydrology

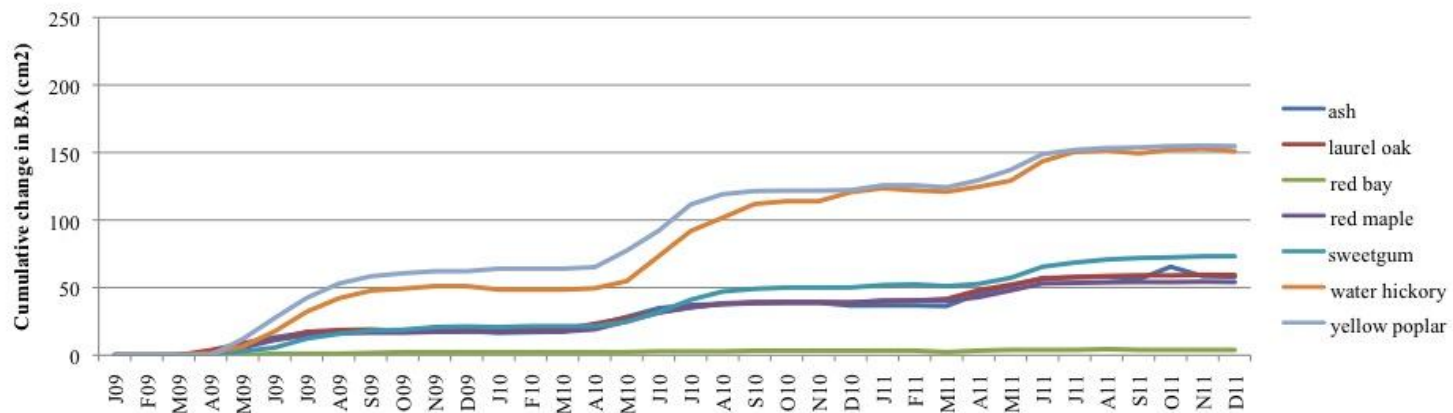


Results: Litterfall

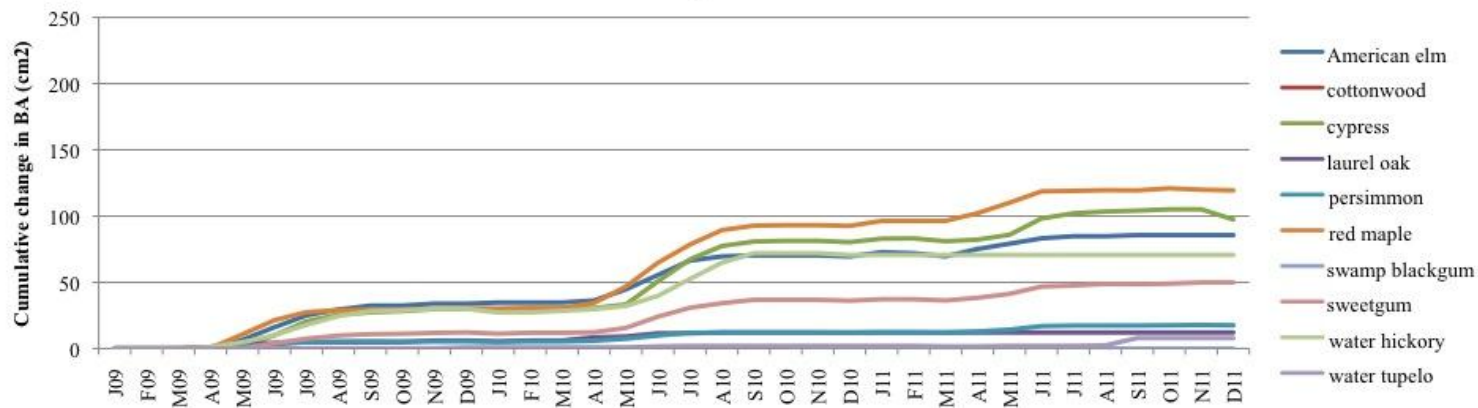


Results: Tree Growth

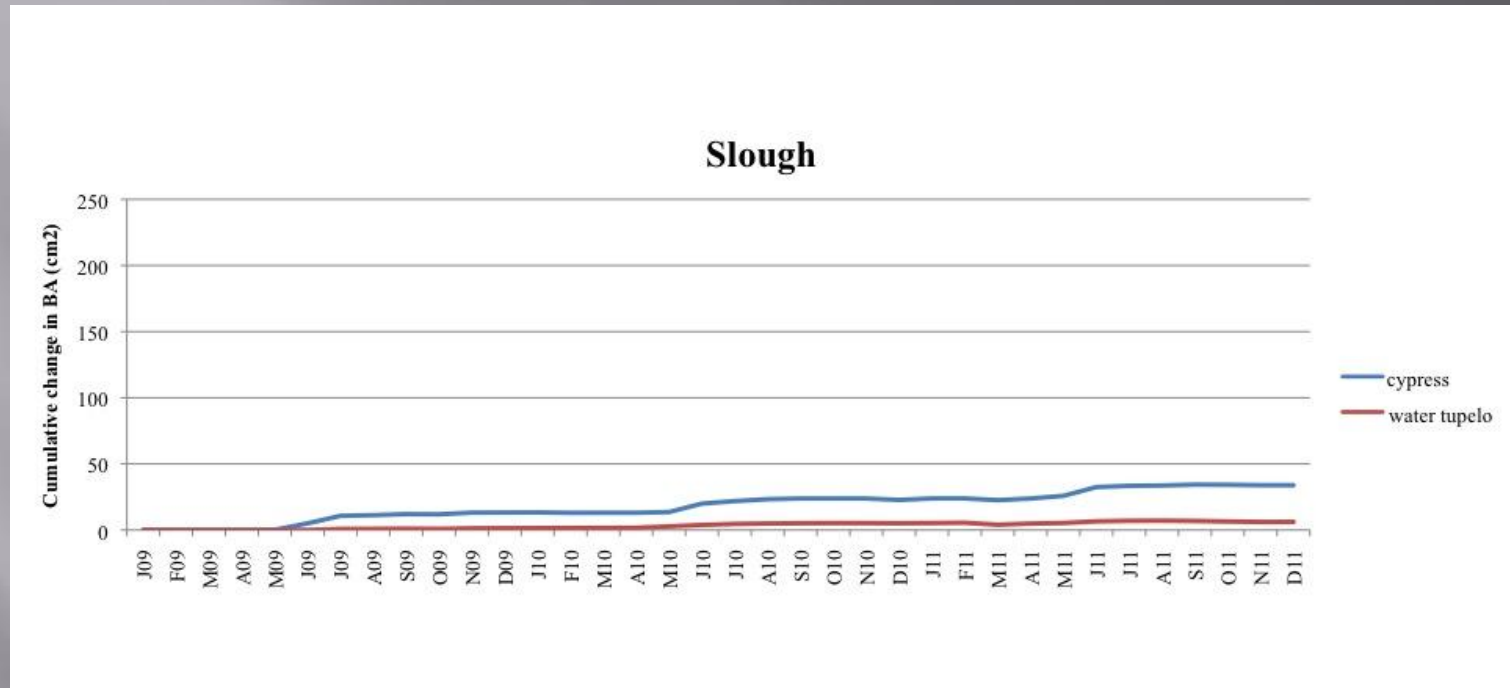
Drain



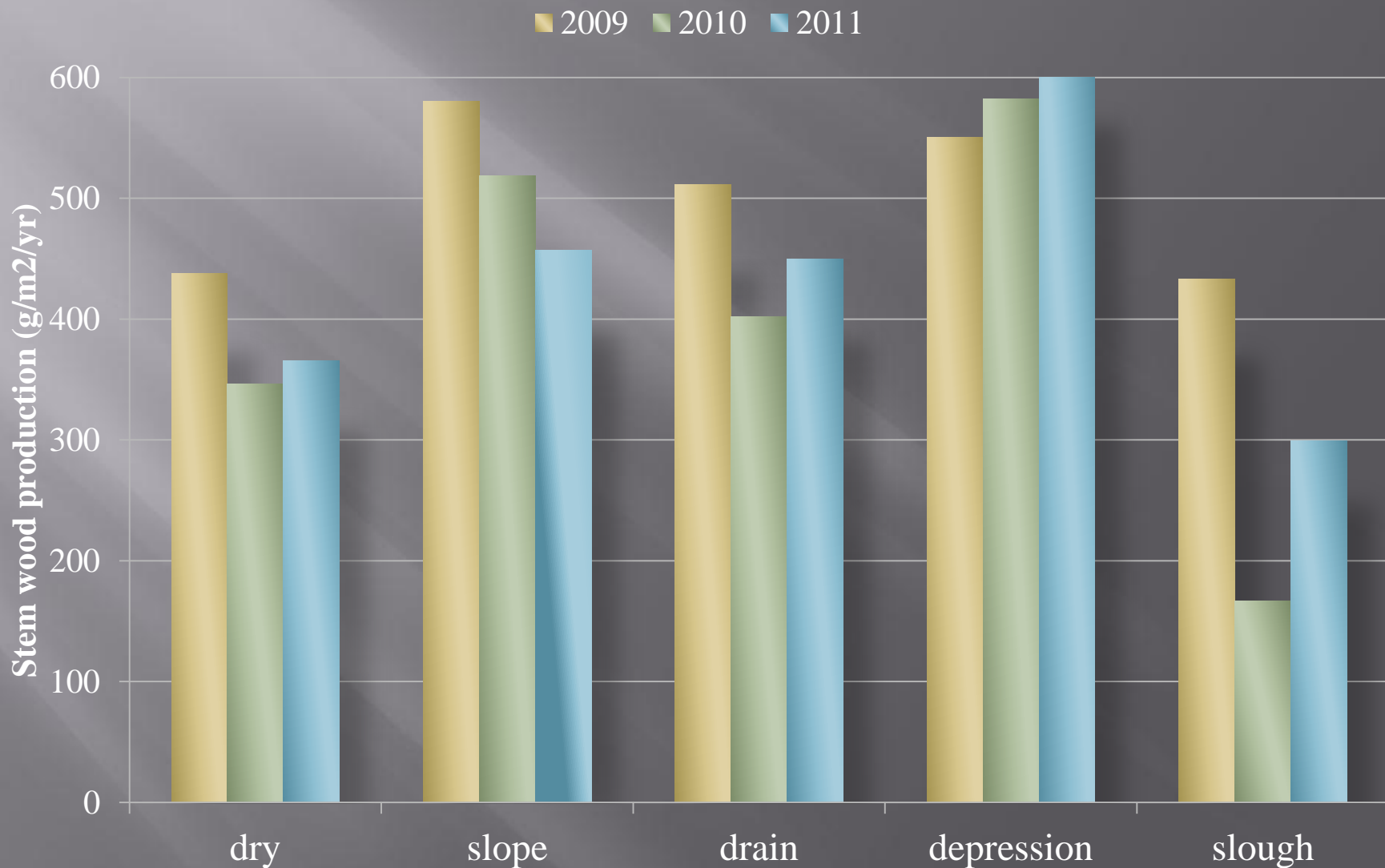
Depression



Results: Tree Growth

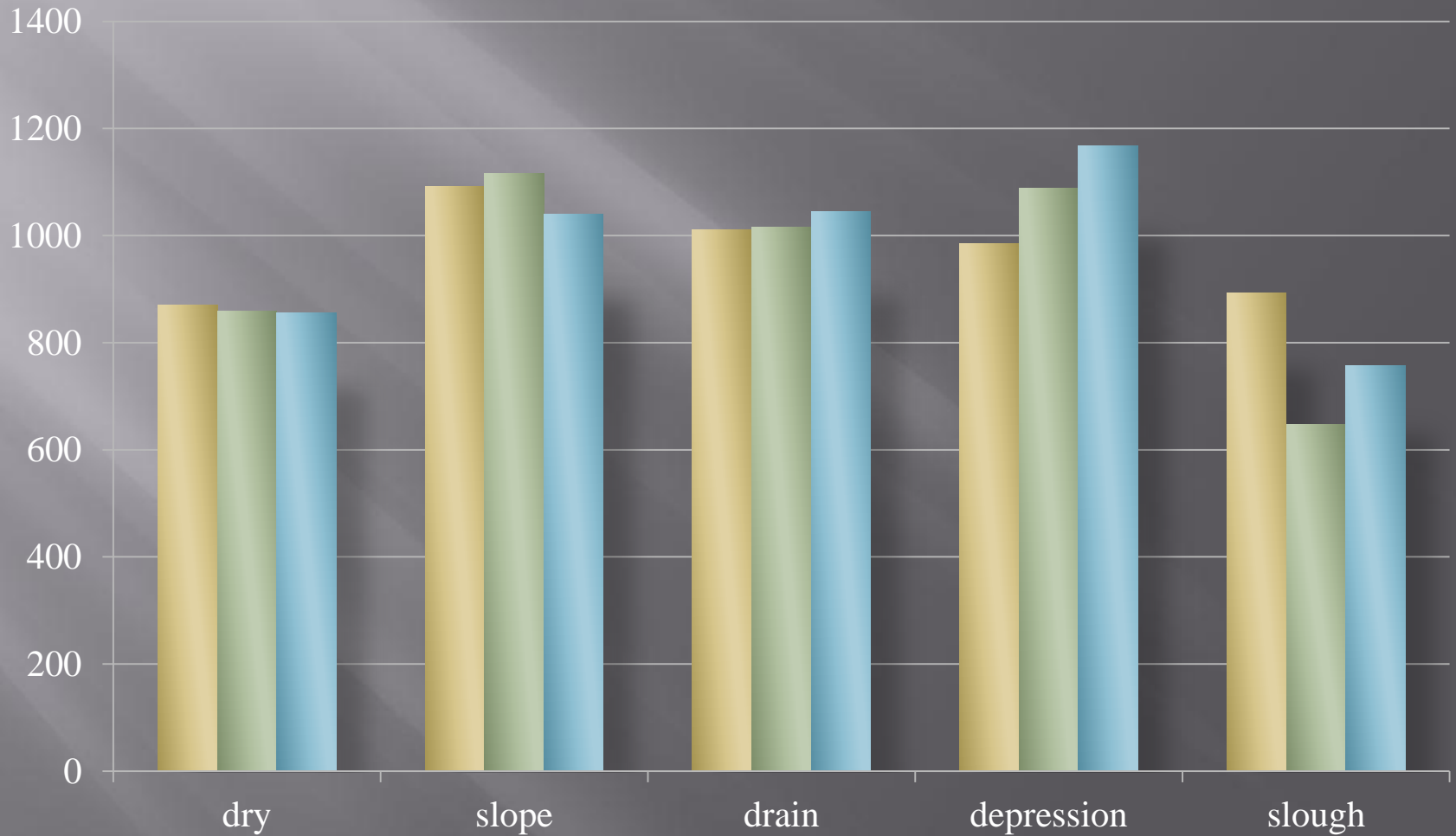


Results: Tree Growth



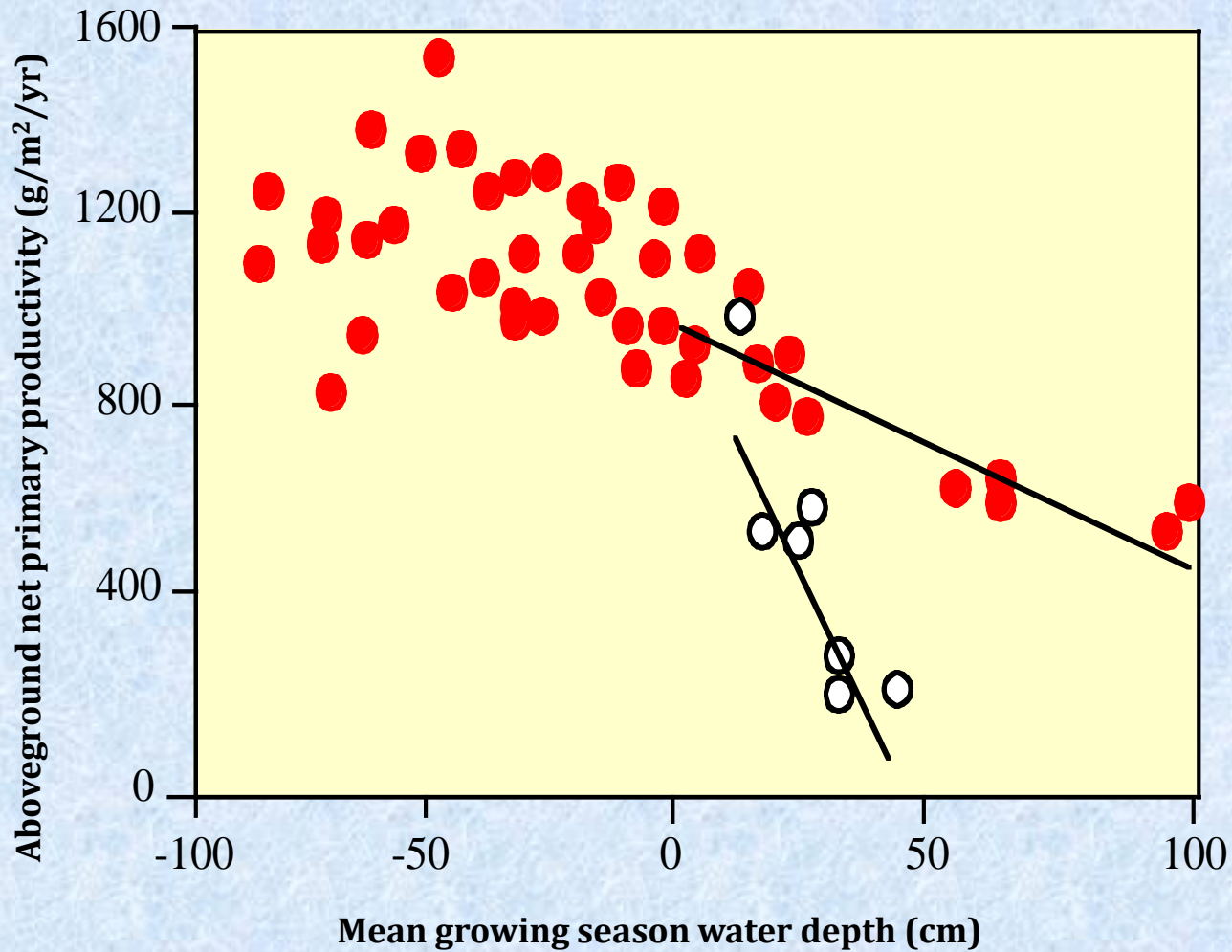
Results: NPP

■ 2009 ■ 2010 ■ 2011



Relationships between forest productivity and hydrology

Southeastern U.S. floodplain and swamp forests



Megonigal et al. 1997

Acknowledgements

National Audubon Society
Norm Brunswig

Holcim (USA) Inc.
Glenn Raynor

Clemson-Baruch Institute of
Coastal Ecology & Forest Science
Stephen Hutchinson
Brian Williams

University of South Carolina
Allyson Shea
Jackie Koehn

